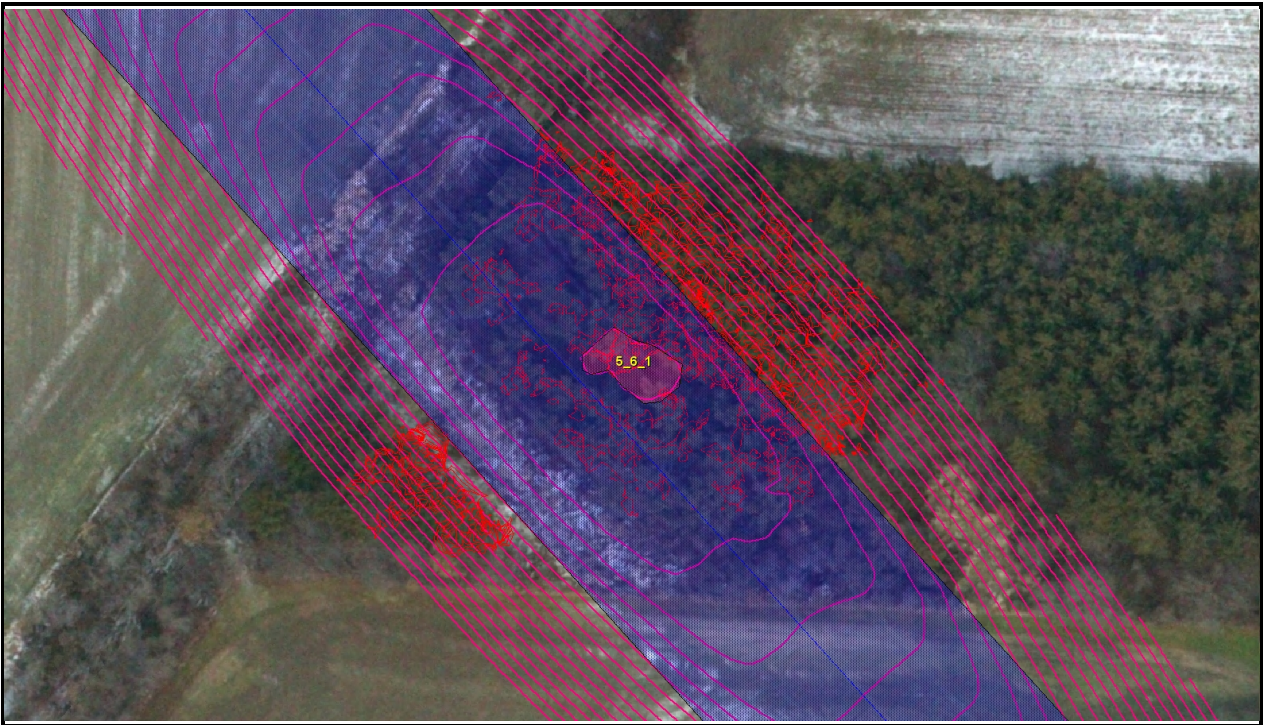


Task Order 5_6_1



Starting Point: Latitude/Longitude: -82°52'13", 40°13'51"
NAD_1983_StatePlane_Ohio_South_FIPS_3402_Feet: 1865086.0467, 812769.522
Stationing/Offset from PI 5: 469.4421ft., 0 ft.
Ending Point: Latitude/Longitude: -82°52'13", 40°13'51"
NAD_1983_StatePlane_Ohio_South_FIPS_3402_Feet: 1865094.2803, 812760.2592
Stationing/Offset from PI 5: 481.8255ft., 0 ft.

Notes:

Vegetation in ROW penetrates (by 5' to 20') clearance surface. Cut vegetation back to a maximum height above ground level of 5'.

Name:	
Date:	
Time:	
Notes:	

Task Order Attributes:

Targeted Height/Area Estimated from video/imagery

2.16597 acres

Targeted Density Estimated from video/imagery

30.89% of span

Target Diameter = Less than 6 inches

Topography/Terrain:

Sensitivities:

Unrestricted

Prescriptions:

Vegetation in ROW:

Strategy: Cyclic Maintenance

Application: Area Treatment

Method: Mechanical

Technique: Cutting

Equipment: Truck/Chainsaw

Name:	
Date:	
Time:	
Notes:	